



Contemporary 1 façade*

PENINSULA 17

Contemporary 1 or 2



**TURN KEY
FIXED PRICE:** \$459,000

Lot 24 (350m²)
422 Chambers Flat Rd, Logan Reserve QLD
Middleton Park

HOUSE PRICE: \$240,000

HOUSE SIZE: 160.69m²

LAND PRICE: \$219,000

REGISTRATION: Forecast April 2021

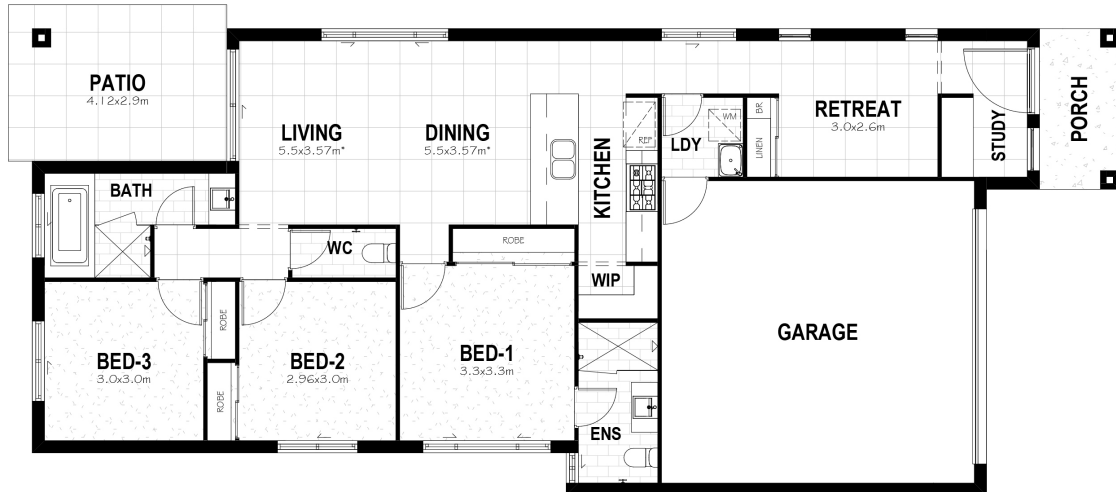
INCLUSIONS

- > Roller blinds and fly screens
- > Split system air-conditioners
- > NBN connection including data points
- > 6 year structural warranty
- > Soft close cupboards and draws
- > Designer tiles and splash back
- > 'A' grade wintergreen turf

*Artist impression only, all inclusions are as per Specifications of Works. Correct as of 31/03/2021

Peninsula 17

3 2 2 2



INCLUSIONS

Luxury living throughout

- Contemporary 1 or 2 Facade
- Keyless entry
- 2440mm ceilings
- LED lights
- Roller blinds
- Ceiling fans
- 2 x Split system air-conditioners
- NBN connection including 2 data points
- 450 x 450mm ceramic floor tiles
- Quality range carpet
- Vinyl robe sliders to bedrooms
- Fly screens to all windows and sliding glass doors
- Up to 280 Litre electric heat pump
- 6 year structural warranty

Kitchen, Bathroom and Ensuite

- 20mm engineered stone benchtops
- 600mm x 300 mm wall tiles
- Soft close cupboards & drawers
- ARTUSI 600mm appliances & dishwasher
- Above vanity basins
- Contemporary range of toilets, tapware and fittings
- Designer tiles & splash backs

External Features

- Exposed aggregate driveway & front path
- Up to 8m² native garden bed to front
- 'A' grade wintergreen turf
- Colorbond roof, fascia and gutters
- Render to façade only
- Face bricks or cladding to sides and rear
- Letter box with street number
- Timber fencing & gates
- 2x external taps

*Artist impression only, all inclusions are as per Specifications of Works. Correct as of 31/03/2021